

The rugged HD units are ideal for sanding, screening, stone care and concrete work

50 Ft. Heavy Duty Cord with Durable spring steel strain relief

116 lbs - Optimum weight delivers more resistance against the floor to get the job done better and faster

1.5HP 66 Frame Motor with Triple Planetary Gears

Hi torque, totally enclosed, fan cooled motor handles dust, moisture and other harsh conditions

Non-marking PVC bumper prevents marking furniture or walls



Dual metal switch levers, left or right hand operation

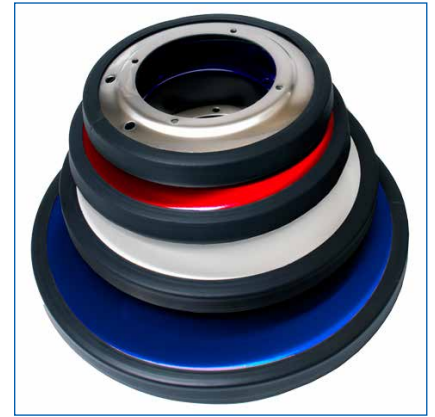
Tough All steel and stainless steel construction

Extremely durable & convenient handle adjustment mechanism is foot operated.

Chrome Plated Motor Cover

5" non-marking wheels

13", 15", 17" & 20" heads available, interchangeable, color options available



Dual Capacitors



Quick disconnect pigtail



PAD Driver



Optional Brushes - See Table on Reverse for Part #s



5 YEAR WARRANTY

SATURN HD

HEAVY DUTY LOW SPEED FLOOR MACHINES

Specifications:

| 13LS4-BK** | 15LS4-SS* or 15LS4-BK** | 17LS4-SS* or 17LS4-BK** | 20LS4-SS* or 20LS4-BK** |
|---|--|--|--|
| 13" Head | 15" Head | 17" Head | 20" Head |
| 172 RPM | 172 RPM | 172 RPM | 172 RPM |
| 1.5 HP, TEFC Motor | 1.5 HP, TEFC Motor | 1.5 HP, TEFC Motor | 1.5 HP, TEFC Motor |
| Black Powder Coated Brush Cover | Stainless Steel or Black Powder Coated Brush Cover | Stainless Steel or Black Powder Coated Brush Cover | Stainless Steel or Black Powder Coated Brush Cover |
| 109 lbs. | 111 lbs. | 113 lbs. | 116 lbs. |
| Anti-fatigue Handle Grips | Anti-fatigue Handle Grips | Anti-fatigue Handle Grips | Anti-fatigue Handle Grips |
| 50' Power Cord | 50' Power Cord | 50' Power Cord | 50' Power Cord |
| 11 Amps | 11 Amps | 11 Amps | 11 Amps |
| Gear box "Steel Triple Planetary" | Gear box "Steel Triple Planetary" | Gear box "Steel Triple Planetary" | Gear box "Steel Triple Planetary" |
| Shipping Weight 126 lbs. | Shipping Weight 128 lbs. | Shipping Weight 130 lbs. | Shipping Weight 133 lbs. |
| Shipping Dimensions: 48"H x 26.5"L x 23"W | Shipping Dimensions: 48"H x 26.5"L x 23"W | Shipping Dimensions: 48"H x 26.5"L x 23"W | Shipping Dimensions: 48"H x 26.5"L x 23"W |
| 5 Year Warranty | 5 Year Warranty | 5 Year Warranty | 5 Year Warranty |

* SS notes stainless steel brush cover ** BK notes black powder coated brush cover

Optional Pad Drivers and Brushes:



| Model# | Description – 17" Floor Machines |
|----------|---|
| 1601BR | 16" Pad Driver with Molded-In Clutch Plate, For 17" Machine |
| 1603BR | 16" Pad Driver, For 17" Machine |
| 1505BR | Nylon Carpet Brush, 15" Block, For 17" Machine |
| 1506BR | Poly Carpet Brush, 15" Block, For 17" Machine |
| 1507BR | Grit Brush, 15" Block, For 17" Machine, 46 Grit |
| 1507BR-1 | Grit Brush, 15" Block, For 17" Machine, 80 Grit |
| 1507BR-2 | Grit Brush, 15" Block, For 17" Machine, 180 Grit |
| 1507BR-3 | Grit Brush, 15" Block, For 17" Machine, 500 Grit |

| Model# | Description – 20" Floor Machines |
|----------|---|
| 1901BR | 19" Pad Driver with Molded-In Clutch Plate, For 20" Machine |
| 1903BR | 19" Pad Driver, For 20" Machine |
| 1805BR | Nylon Carpet Brush, 18" Block, For 20" Machine |
| 1806BR | Poly Carpet Brush, 18" Block, For 20" Machine |
| 1807BR | Grit Brush, 18" Block, For 20" Machine, 46 Grit |
| 1807BR-1 | Grit Brush, 18" Block, For 20" Machine, 80 Grit |
| 1807BR-2 | Grit Brush, 18" Block, For 20" Machine, 180 Grit |
| 1807BR-3 | Grit Brush, 18" Block, For 20" Machine, 500 Grit |



Questions? Contact Us: 800.338.3342 • edic-usa.com

