



# AMERICAN SPECIALTIES, INC.

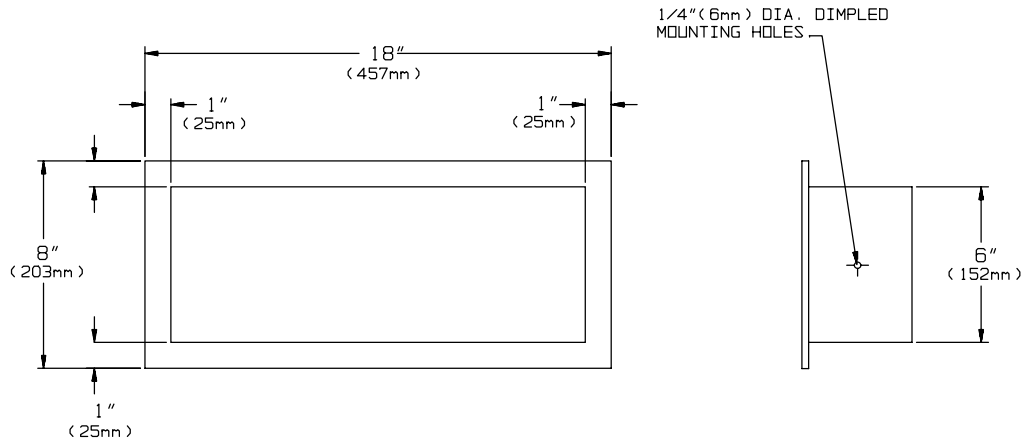
441 Saw Mill River Road, Yonkers, NY 10701 (914) 476-9000

MODEL No: 0412

ISSUED: 1-87

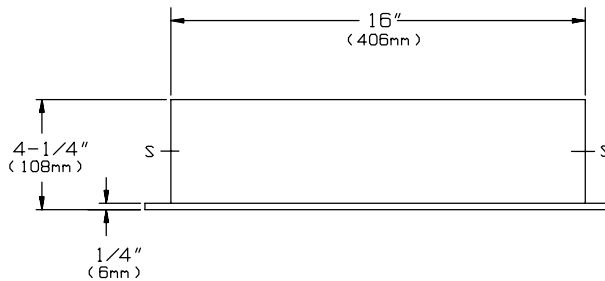
REVISED: 9-04

## RECESSED SHELF



ELEVATION

SIDE VIEW



TOP VIEW

### SPECIFICATION

Recessed Shelf shall be fabricated of alloy 18-8 stainless steel, type 304, 22 gauge. All exposed surface shall be N° 4 Satin finish and be protected during shipment with a PVC film easily removable after installation. Face trim shall be 1" (25.4 mm) wide formed from one piece with no miters, welding or open seams and have a 1/4" (6.35 mm) square return to wall. Structural assembly of all components shall be of welded construction.

**Recessed Shelf shall be Model N° 0412 as manufactured by American Specialties, Inc. 441 Saw Mill River Road Yonkers, New York 10701-4913**

### INSTALLATION

Unit is recessed mounted in wall using N° 10 self tapping screws (by others) through concealed mounting holes.

**Rough Wall Opening (RWO) required is..... 16-1/2" W x 6-1/2" H x 4" D (419mm x 165mm x 102mm) minimum).**

For maximum usability and compliance with ADA Accessibility Guidelines, unit should be installed so that shelf is 54" (1371 mm) maximum above finished floor (AFF) when clear side access is provided; 48" (1168 mm) maximum AFF with forward reach access only provided and 46" (1168 mm) maximum with side reach over an obstruction (ie: vanity).

### OPTIONS

Shelf available in any length up to 84" (2133 mm) maximum. Indicate length required in box below.

Model N° 0412-M xx Length: xx=

Accessory Specialties

AMERICAN DISPENSER

Desert Ray Products

**WATROUS** .INC.