



**AMERICAN SPECIALTIES, INC.**

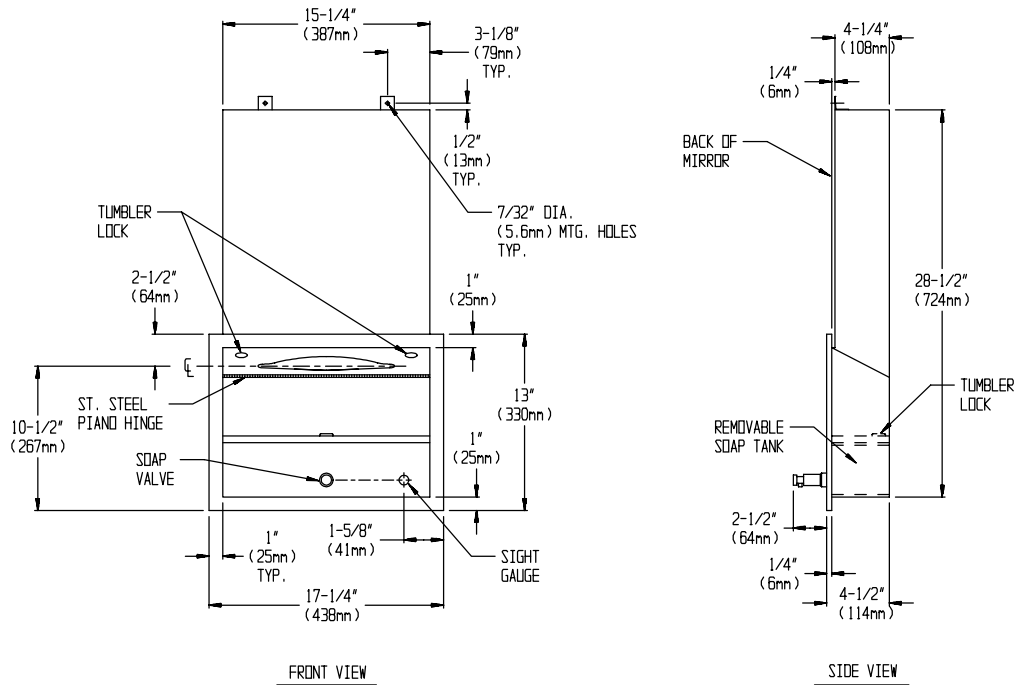
441 Saw Mill River Road, Yonkers, NY 10701 (914) 476-9000

MODEL No: 0431

ISSUED: 1-87

REVISED: 7-04

**RECESSED CABINET WITH OPEN SHELF, SOAP AND PAPER TOWEL DISPENSER**



**SPECIFICATION**

Recessed Cabinet with Open Shelf, Soap and Paper Towel Dispenser with concealed body shall hold 800 standard multi-fold or 600 standard C-fold paper towels and dispense 101 ounces (3 liters) of and dispense 101 ounces (3 liters) of liquid and lotion soaps, synthetic detergents and antibacterial soaps containing PCMX and/or Triclosan. Towel dispenser door, soap dispensing tank and frame shall be fabricated of alloy 18-8 stainless steel, type 304, N<sup>o</sup> 22 gauge. Towel dispensing slot shall have a fully hemmed-in rolled edge for snag-free dispensing and user safety. Dispenser door shall be attached to cabinet at bottom with a full length 3/16" dia. (5mm) stainless steel multi-staked piano hinge. Soap and towel dispenser shall be held closed with a tumbler lock keyed alike to other ASI Washroom Equipment. Face trim shall be 1" (25mm) wide formed from one piece with no mitres, welding or open seams and have 1/4" (6mm) square return to wall. Structural assembly of all components shall be of welded construction. A tamper resistant sight gauge shall be provided. Valve operation shall comply with ADA Accessibility Guidelines by requiring no more than 5 lbs<sub>f</sub> (22.2 Newtons) pressure to actuate and require no grasping or twisting by operator. Valve shall be constructed of a chrome-plated brass body with stainless steel and plastic internal parts. All exposed surfaces shall be N<sup>o</sup>4 satin finish and be protected during shipment with a PVC film easily removable after installation.

**Recessed Cabinet with Open Shelf, Soap and Paper Towel Dispenser with concealed body shall be Model N<sup>o</sup> 0431 as manufactured by American Specialties, Inc., 441 Saw Mill River Road, Yonkers, New York 10701-4913**

**INSTALLATION**

Unit is recessed mounted in wall using N<sup>o</sup> 10 self tapping screws (by others) through concealed mounting holes provided. For compliance with ADA Accessibility Guidelines, unit should be installed so that towel dispenser slot is 54" (1372mm) maximum above finished floor (AFF) if clear floor side reach access is provided or 48" (1219mm) maximum AFF if clear floor forward reach access only is provided. Note that bottom of RWO is 3/4" (19mm) above bottom of unit. If unit is to be installed behind mirror, height is governed by location of bottom edge of reflecting surface.

**Rough Wall Opening (RWO) required is..... 15-3/4" W x 29-1/2" H x 4-1/4"D minimum (400mm x 749mm x 108mm).**

*Please note: because unit works in conjunction with the installation of a mirror, make sure that cabinet aligns with finished wall. If mirror has hanging bracket (ie: model N<sup>o</sup> 0600) take care not to attach into cabinet body.*

**OPERATION**

Soap is manually dispensed by pushing valve button until supply is depleted. Towels are self-feeding until supply is depleted. Unit may be reloaded easily by opening door or tank assembly with a partial load in-place and will continue to feed properly. Tank supply is replenished manually on cycle determined by maintenance needs.

**OPTIONS**

See options list of available combinations of configurations.

Accessory Specialties

AMERICAN DISPENSER

Desert Ray Products

WATROUS INC.