



AMERICAN SPECIALTIES, INC.

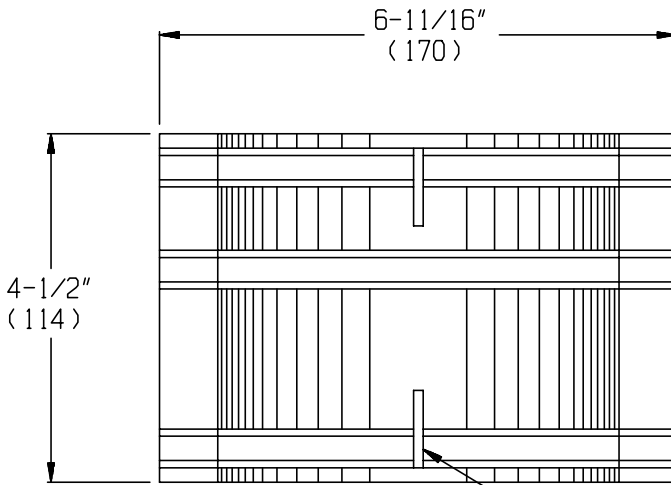
441 Saw Mill River Road, Yonkers, NY 10701 (914) 476-9000
www.americanspecialties.com

MODEL No: 39

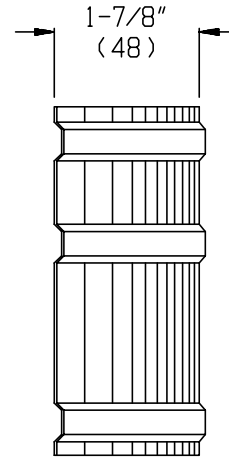
ISSUED: 1-87

REVISED: 11-06

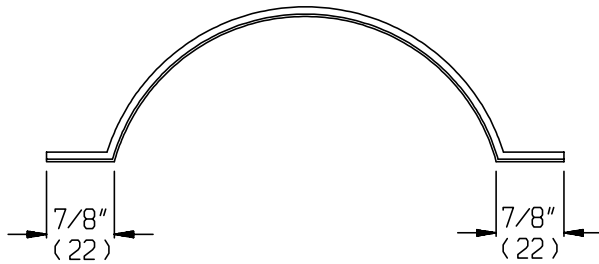
DRY WALL MOUNTING CLAMP



ELEVATION



SIDE VIEW



PLAN VIEW

ACCESSORY MOUNTING SLOTS (TYP)
1/8" X 1" (3 X 25)

NOTE:

ALL DIMENSIONS ARE IN INCHES (millimeters).

SPECIFICATION

Dry Wall Mounting Clamp shall be fabricated of 20 gauge corrosion protected steel. Unit shall be provided with universal mounting slots to accommodate N^o 10 self-tapping screws (supplied separately by others) for use with ASI accessories (supplied separately) Model N^o's 0402-Z, 0404-Z, 0406-Z, 0410-Z, 7402 (B/S), 7402-H (B/S), 74022 (B/S), 74022-H (B/S), 7404 (B/S), and 7410 (B/S), with dimpled mounting holes in rear wall. Clamp shall provide secure anchorage in drywall installation for listed units with specified RWO.

Dry Wall Mounting Clamp shall be Clamp Model N^o 39 as manufactured by American Specialties, Inc., 441 Saw Mill River Road, Yonkers, New York, 10701-4913

INSTALLATION

Provide appropriate wall opening. Loosely attach clamp to the back of the listed Model unit with stainless steel Philips flat or oval head N^o 10 self-tapping screws (provided by others to suit wall conditions). Insert into RWO and adjust clamp so that it grips inside wall surface through opening. Secure accessory to clamp and wall by tightening screws.

Accessory Specialties

AMERICAN DISPENSER

Desert Ray Products

WATROUS inc.