



**AMERICAN SPECIALTIES, INC.**

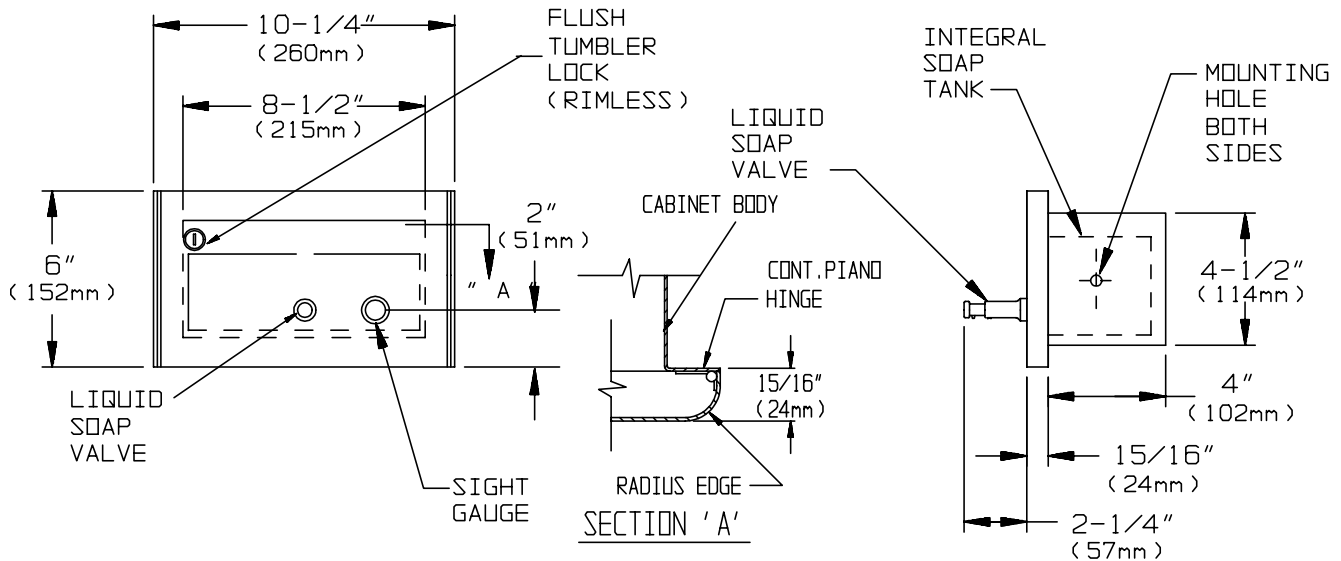
441 Saw Mill River Road, Yonkers, NY 10701 (914) 476-9000

MODEL No: 9326

ISSUED: 1-87

REVISED: 7-05

**PROFILE COLLECTION RECESSED HORIZONTAL LIQUID SOAP DISPENSER**



**SPECIFICATION**

Profile Collection Recessed Horizontal Liquid Soap Dispenser Unit shall hold and dispense 52 oz (1.54 liters) of liquid and lotion soaps, synthetic detergents and antibacterial soaps containing PCMX and/or Triclosan. Dispenser tank, door, mounting frame and push button valve shall be fabricated of alloy 18-8 stainless steel, type 304; door and tank shall be welded as one integral unit from 16 gauge; mounting frame shall be 20 gauge. Valve shall be constructed of a chrome-plated brass body with stainless steel and plastic internal parts. Door shall be held closed with a flush rimless tumbler lock keyed alike to other ASI washroom equipment and hung on full length 3/16" (5mm) stainless steel piano hinge and shall have 3/4" (19mm) rounded vertical edges and 15/16" (24mm) square horizontal returns to wall. Cabinet shall have no exposed fastening devices. An impact resistant clear plastic liquid level indicator shall be provided. Valve operation shall comply with ADA Accessibility Guidelines by requiring no more than 5 lbs<sub>f</sub> (22.2 Newtons) of pressure to actuate and require no grasping or twisting by operator. All exposed surfaces shall be N<sup>o</sup>4 satin finish.

**Profile Collection Recessed Horizontal Liquid Soap Dispenser shall be Model N<sup>o</sup> 9326 as manufactured by American Specialties, Inc., 441 Saw Mill River Road, Yonkers, New York 10701- 4913**

**INSTALLATION**

Unit is mounted in wall recess using two (2) N<sup>o</sup> 10 self tapping screws (by others) through concealed mounting holes provided. For compliance with ADA Accessibility Guidelines, unit should be installed so that dispenser valve is 54" (1372mm) maximum above finished floor (AFF) if clear floor side reach access is provided or 48" (1219mm) maximum AFF if clear floor forward reach access is provided or 46" (1168mm) max. AFF side reach over an obstruction (i.e. vanity) is only provided. Note that top of RWO is 9/16" (14mm) below top of unit. For general utility install unit so that dispenser valve is 6" to 10" (152mm to 254mm) above top of vanity.

**Rough Wall Opening (RWO) required is..... 9"W x 4-7/8"H x 4-1/4"D (229mm x 124mm x 108mm)**

**OPERATION**

Soap is manually dispensed by pushing valve button until supply is depleted. Unit may be reloaded easily by swinging out door/tank assembly with a partial load in-place and will continue to feed properly. Tank supply is replenished manually on cycle determined by maintenance needs.