

QUICK START GUIDE

Thank you for purchasing your new Eureka vacuum!

Important instructions

For easy assembly, please take a few moments to read this Quick Start Guide.

If you have questions about your new vacuum, please contact our customer service helpline at **1-800-282-2886**. We're here to help!

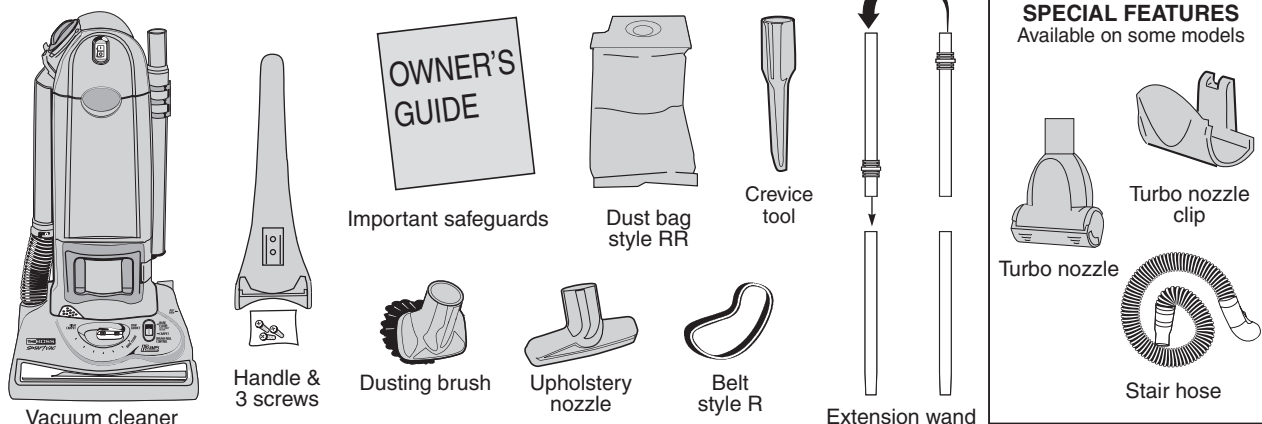
www.eureka.com

Helpline hours:
8 a.m. to 7:30 p.m. (CST), Monday - Friday
10 a.m. to 6:30 p.m. (CST), Saturday - Sunday



STEP 1

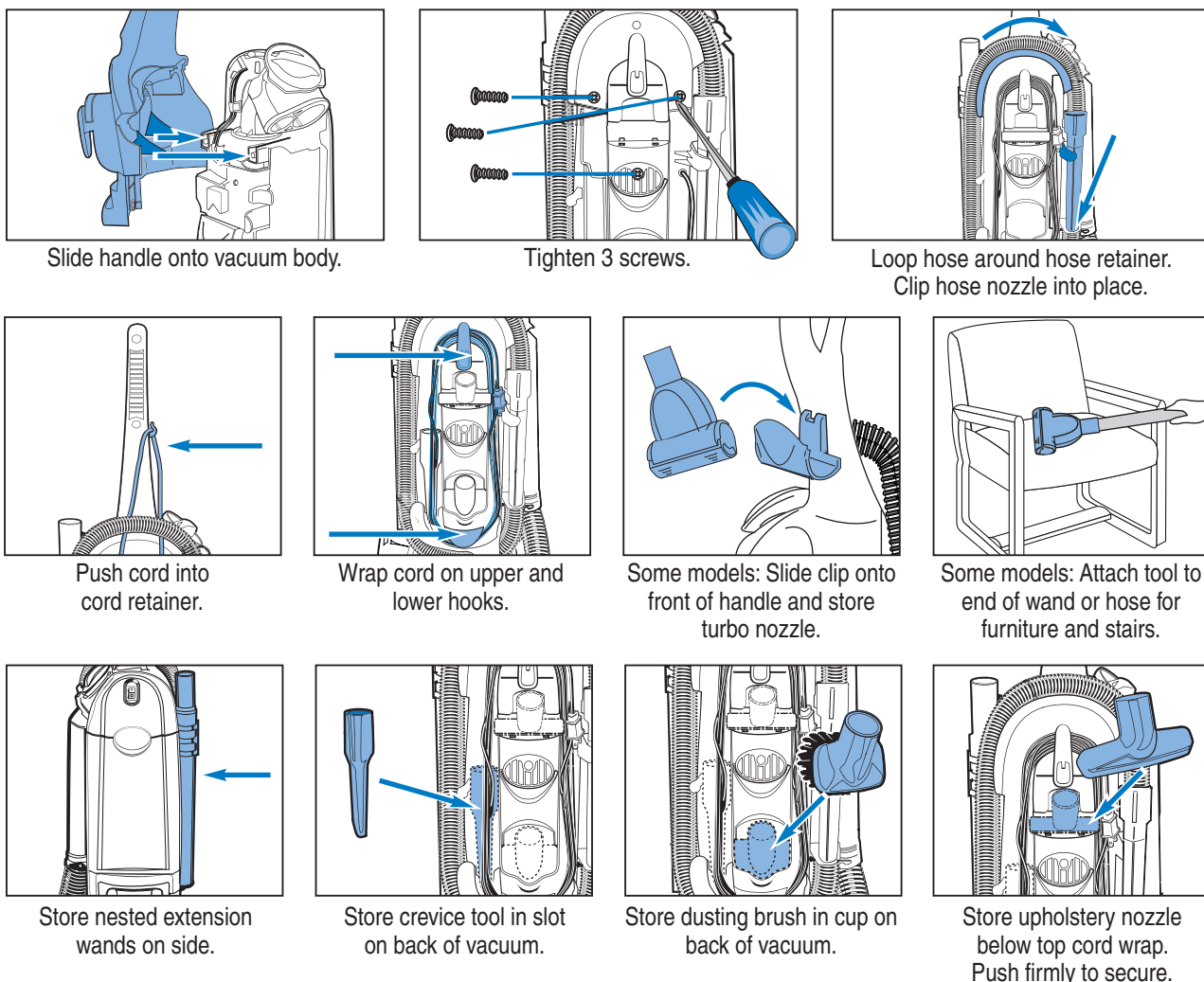
What's in the carton



STEP 2

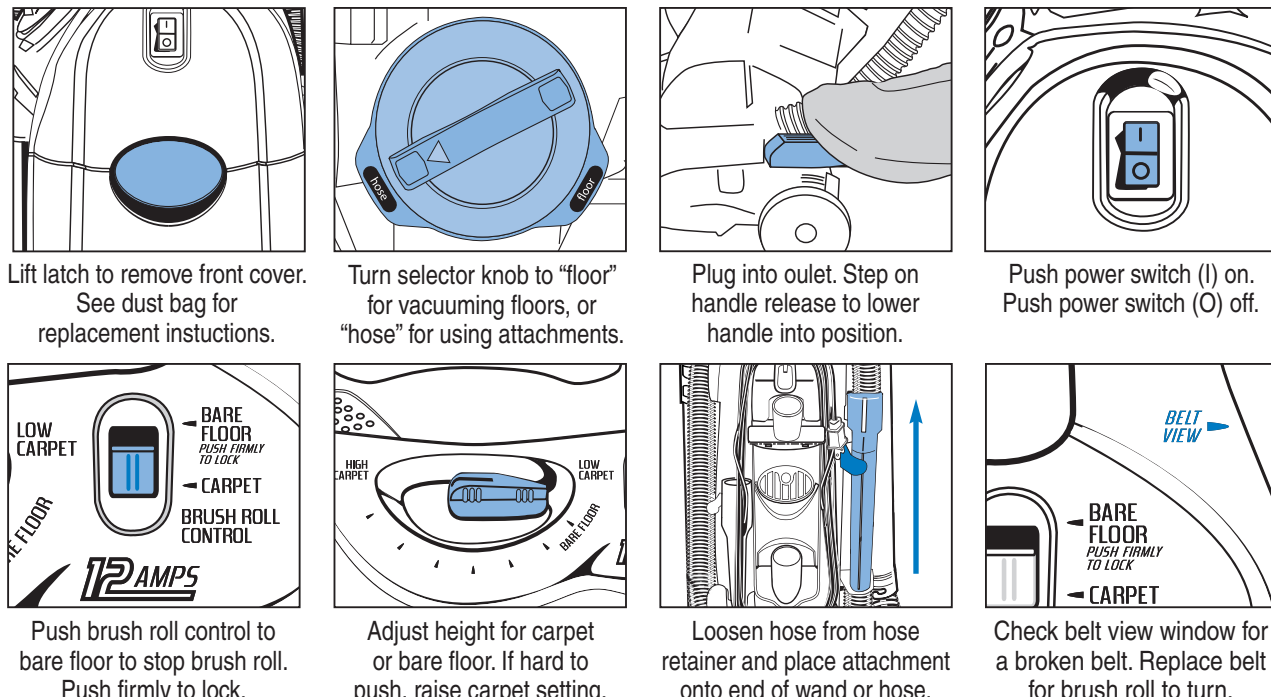
Easy assembly

READ ALL INSTRUCTIONS BEFORE USING THIS VACUUM CLEANER. Moving parts. Make sure power switch is in OFF (O) position before plugging in power cord. Assemble the vacuum cleaner before using.



STEP 3

Get ready to vacuum



PROBLEM SOLVING
Refer to Owner's Guide.

MAINTENANCE SCHEDULE
Refer to Owner's Guide.