

THE BOSS FLOOR MACHINE

BUILT A FLEET OF MACHINES WITH FIVE APRONS

A super heavy-duty floor machine with five interchangeable aprons!

Private Label Branding Available!



Heavy-Duty
Safe & Easy to Use
Fully Adjustable
Powerful Motor
Super Value
Five Apron Sizes

SUPER VALUE. VERSATILE. POWERFUL. POWERFUL FLOOR CARE AND MAINTENANCE FROM MERCURY.

The BOSS Floor Machine from Mercury maintains every type of floor in any size facility. Build a fleet of floor machines with up to five interchangeable aprons and only one base unit! The triple-planetary, high torque transmission handles the toughest jobs.



THE BOSS FLOOR MACHINE

by Mercury Floor Machines



Manufactured with
Pride in the U.S.A.

SEE THE BENEFITS

of the BOSS Floor Machine with Interchangeable Aprons

- 1.5 HP precision balanced, super heavy-duty, 66-frame motor. Available in 175 RPM single speed or 175/300 RPM dual speed.
- Five interchangeable aprons with one base machine gives you a fleet of floor care machines for a range of tasks in any size facility. A complete order includes one base unit with one or more aprons.
- Triple-planetary high torque transmission handles the most demanding applications.
- The all-metal, balanced chassis provides more precise pad pressure and beautiful results. The polished metal chassis is easy to clean and looks newer longer.
- Low profile drive apron easily reaches under counter coves and beds.
- Safety-enhanced interlock switch on the handle leaves both hands conveniently in control.
- Safety-enhanced, non-conductive dual triggers on handle eliminate shock potential and includes heavy-duty dual switch levers.
- Fully adjustable 48" handle is comfortable for all operators.
- 6" non-marking transport wheels and non-marking, super-thick bumper protects walls and baseboards.
- Includes (1) 50-foot safety power cord. Motor plugs into cable at the base of the handle. Maintenance is safe and easy.
- "Best Warranty on the Planet" – 5-years on motor, gearbox and chassis.

SUPER VALUE AND PRODUCTIVITY

See the Benefits of the BOSS System

- **Five Interchangeable Aprons Available:** 13", 15", 17", 19" and 21" interchangeable, non-marking aprons with full wrap bumpers. Aprons mount with three easy-to change thumb screws.
- **Optional Solution Tank:** for efficient wet scrubbing.
- **Optional Unicorn Weight Kit:** add an optional 50 extra pounds of pressure for a comprehensive stone and marble floor restoration program.



Specifications:

THE BOSS FLOOR MACHINE

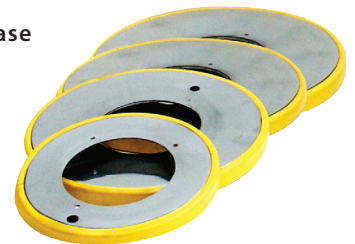
Model:	BOSS-I	BOSS-II
Brush Speed:	175 RPM	175/300 RPM
Motor Type:	1.5 HP A/C, Dual Capacitors, 13-15 Amps	
Apron Sizes:	13", 15", 17", 19" and 21" with Easy Thumb-Screw Mount	
Brush Drive:	"92" Style / "B" Style Drive and Clutch Plate	
Chassis:	Polished Aluminum	
Wheels:	6" Non-Marking Transport Wheels	
Optional Unicorn Weight Kit:	(5) 10 lb. Weights with Mounting Shaft	
Optional Solution Tank:	4-Gallon Polyethylene Molded Tank with Flexible, Chemical-Resistant Hose to Deliver to Apron Fitting	
Power Cord:	50-Foot, 14/3-Gauge Safety Power Cord	
Weight:	98-107 lbs. Depending on Apron Selection	
Warranty:	5-Years on Motor, Gearbox and Chassis	

Aprons and Pad Drivers:

APRONS WITH BUMPERS

Part No: A-163-1	13" Apron with Bumper	3 lbs.
Part No: A-167-1	15" Apron with Bumper	4 lbs.
Part No: A-169-1	17" Apron with Bumper	5 lbs.
Part No: A-171-1	19" Apron with Bumper	6 lbs.
Part No: A-172-1	21" Apron with Bumper	7 lbs.

A complete order includes (1) base unit with (1) or more aprons.



**CALL US TODAY IF YOU HAVE ANY QUESTIONS,
OR WOULD LIKE TO PLACE AN ORDER!**

110 South Van Brunt Street, Englewood, NJ 07631
(p) 888-568-4606 | (f) 201-568-7962 | www.mercuryfloormachines.com