

2014 Product List



EBG-20/E



EBG-28



EBG-20/C

Square Scrub Machine Price List



EBG-20/E

each

Our newest model, the EBG-20/E is our lightest and most economical floor prep machine. The 20/E features our powerful high speed 3450 rpm, 1.5 hp motor that pulls just 6.4 amps, and a fixed weight of 114lbs. In addition, the 20/E has a 35ft, 14 gauge standard power cord. What hasn't changed is the durable 10 gauge frame and the reliability of the product being American Made. It also has the same 6"x2" non-marking wheels and ball bearings, and a 3/4" axle. A dust containment kit is optional. This machine does not have an adjustable handle.



American Made



EBG-20/C

each

The EBG-20/C Surface Preparation Machine features a smooth 3450 rpm motor, 50-foot 14 gauge power cord with lighted hospital grade plug, Dust Containment Kit, weighs in at 158 pounds and is versatile enough to provide total floor preparation solutions. The 6"x2" non-marking wheels and ball bearings are coupled with a 3/4" axle for greater mobility. The 20/C includes removable weights. An optional two-piece handle and hour meter are available. **Note: The EBG-20/C is now Carpet and Rug Institute certified.**



American Made



EBG-28

each

Powerful, heavy and durable, the EBG-28 boasts 216 pounds of weight to help penetrate multiple layers of finish. A Dust Containment Kit, 50-foot 14 gauge power cord with lighted hospital plug, 7 gauge base frame, smooth and powerful 3450 rpm, 1.5 hp motor, eight large isolators and American made parts make this machine reliable and able to tackle the biggest job. The 6"x2" non-marking ball bearing wheels and heavy-duty 3/4" axle makes this machine easy to move on any surface type. Add a two-piece handle (optional) and this becomes easily transportable in nearly any vehicle. Also optional is an hour meter.



American Made

Square Scrub Machine Price List



EBG-20/CV

each

EBG-20/C with Vac Installed

A standard EBG-20/C Floor Preparation Machine but with the HEPA Dry Vac Kit installed. For more information on the EBG-20/C please see page 2. For additional information on the HEPA Dry Vac Kit, please see page 9. **Please Note:** HEPA Dry Vac Kit will be boxed separately.



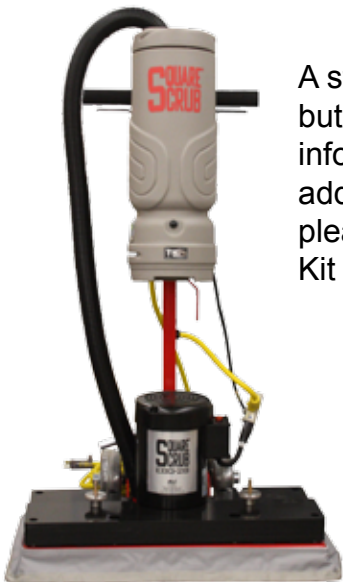
American Made

EBG-28/V

each

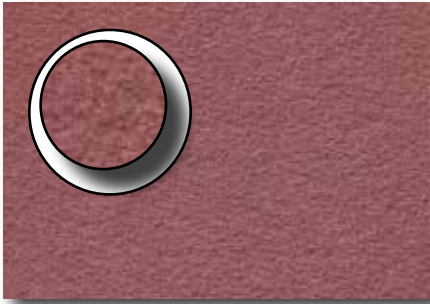
EBG-28 with Vac Installed

A standard EBG-28 Floor Preparation Machine but with the HEPA Dry Vac Kit installed. For more information on the EBG-28 please see page 2. For additional information on the HEPA Dry Vac Kit, please see page 9. **Please Note:** HEPA Dry Vac Kit will be boxed separately.



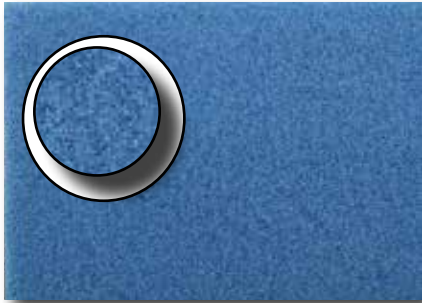
American Made

Pads for Square Scrub Machines



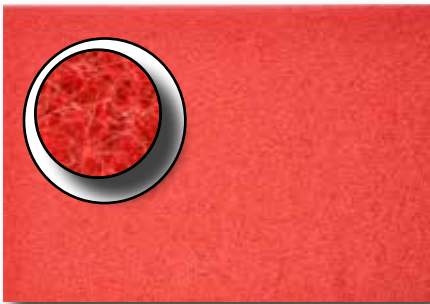
SQP Pad
P1420SQP / P1428SQP
SQP is a thin pad designed to remove floor finish without chemicals. Remove several layers of acrylic finish to prep for recoating. **Use dry or wet** on VCT and tile

10/case



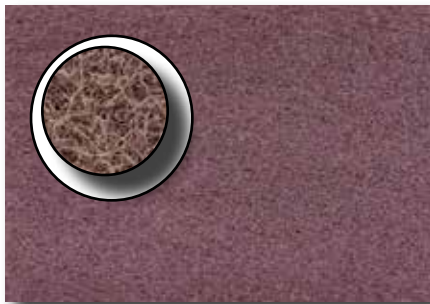
Blue Driver
P1420BLU / P1428BLU
This medium to heavy duty Blue pad can be used for heavier cleaning and buffing situations but **primarily used as a spacer pad**. Always check spacer and driver pads frequently for wear and replace as needed! **Use wet or dry** on VCT and tile

5/case



Red Driver
P1420RED / P1428RED
This light duty Red pad gives best results in a light cleaning and buffing situation. Primarily used as a spacer pad. **Use wet or dry** on VCT and tile

5/case



SHO Wet Strip Pad
P1420SHO / P1428SHO
The SHO pad should be used only for the heaviest of chemical stripping jobs. Extremely abrasive and heavy, dense fibers. Best when dirt and buildup are severe. **Use wet** on VCT and tile

5/case



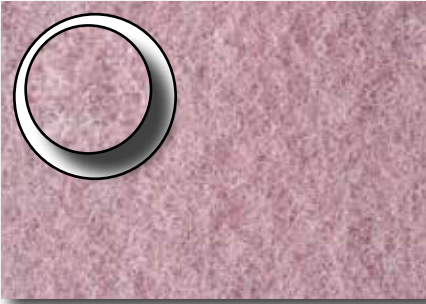
Microfiber Carpet Pad
P1420CB
Combined with our carpet encapsulation cleaner the Microfiber Carpet Pad deep cleans even the highest-traffic carpeting. Quicker drying time. **Use wet** on any carpeted surface. **For 20-inch machines only**
Note: The EBG-20/C is now Carpet and Rug Institute certified.

each

Use in combination with our Encapsulating Carpet Cleaner **SS EBG-ECC**

One Gallon

Pads for Square Scrub Machines



SSE (Enhancer Pad) P1420SSE / P1428SSE

The SSE (Enhancer pad) is designed exclusively for Square Scrub as a restorative pad used with Square Shine Floor Reviver. **Use wet** on VCT and tile

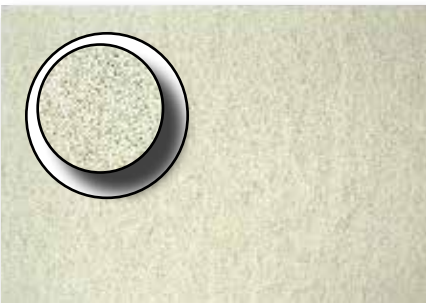
5/case



Xtreme Sponge P1420XTR / P1428XTR

Use the Xtreme Sponge to remove scuff marks on VCT or bathroom tile. A little water and this melamine pad deep cleans and restores shine between refinishing jobs. **Use wet** on VCT and bathroom tile

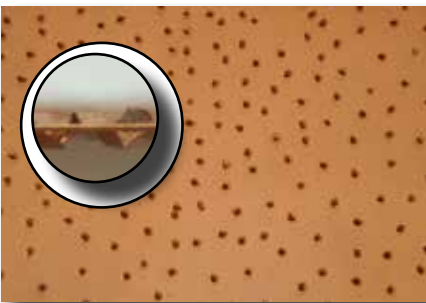
5/case



White Driver P1420DRIVER / P1428DRIVER

The Driver pad is designed to provide a spacer between your sandpaper and the machine. Just 1/4" thick, Use this pad with Sandpaper, marble, concrete and granite diamonds. Always check spacer and driver pads frequently for wear and replace as needed! **DO NOT USE WITH ABRADER PLATE!** Change pad often to protect floor.

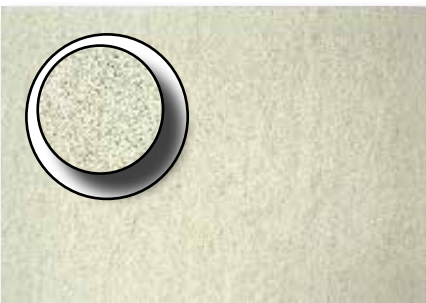
10/case



SAP (Square Abrader Plate) P1319SAP / P1327SAP

Carbide Tungsten steel abrader tool. Designed for heavy duty use, including removing linoleum, glue or paint on concrete. **Use wet** on concrete.

each

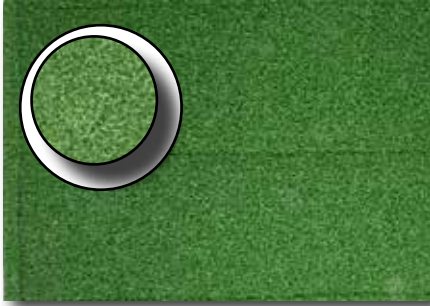


White Pad P1420WHT / P1428WHT

The White pad is used as a light duty polish pad. The 1" thick pad is used without a driver pad and is great for spreading chemicals while buffing.

5/case

Pads for Square Scrub Machines



Tile and Grout Pad P1420TG / P1428TG

Our NEW Tile and Grout pad is best on grouted tile floors, but can be used very effectively on terrazzo, poured non-slip, concrete and other uneven floors.

Use wet on several surfaces

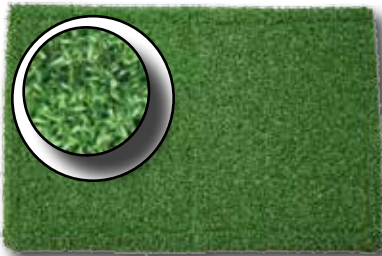
5/case



Square Brush B1420Brush

The Square Brush is ideal for cleaning grout lines in large tile floors (8"x8" or larger) and for scrubbing tough stains on hard surfaces like concrete. Features its own grip face to attach to a driver pad, durable bristles, and a removable center tile and grout pad for cleaning up the grime the bristles remove.

each



Brush Insert P1016BI

The Brush Insert is based on our tile and grout pad and used with the Square Brush. This adds additional scrubbing power to the brush, and provides impressive results!

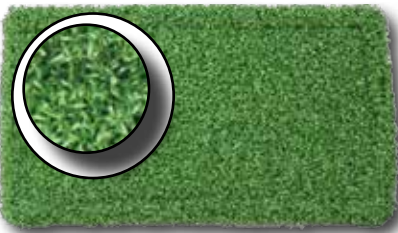
5/case



Motor Scrubber Pad P0008MS

This 8" diameter pad takes our tile and grout pad technology and puts it at the business end of your motorized scrubber.

10/case

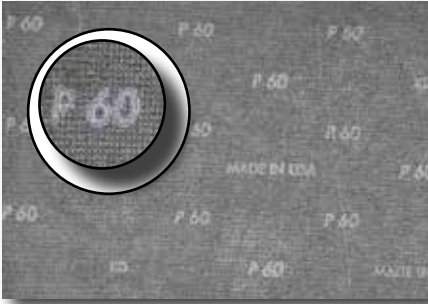


Doodlebug Pad P0511DB

Finally, a doodlebug pad based on our tile and grout pad technology that will get in stubborn tight places. Use this on a standard doodlebug handle.

10/case

Screens

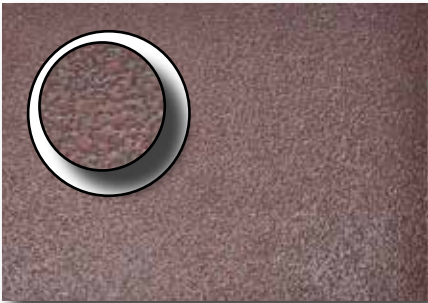


Sandscreens are ideal for finish removal or repair of wood floor surfaces, such as gym floors. Can be used to repair painted floor surfaces. Both sides of screen can be used. Use with Red Driver Pad **P1420RED**.

Use wet or dry on wood or painted concrete.

Grit	item#
20-inch	
60	S1420060
80	S1420080
100	S1420100
120	S1420120
150	S1420150
28-inch	
60	S1428060
80	S1428080
100	S1428100
120	S1428120
150	S1428150
180	S1428180
all screens 10/case	

Sandpaper

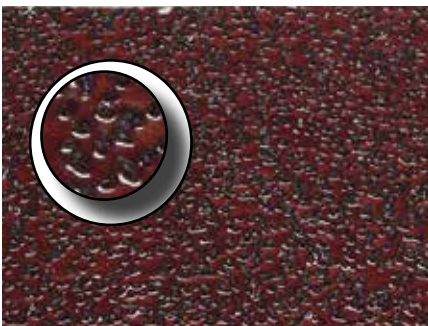


Our Sandpaper comes in a variety of grits to tackle any wood floor needs. Use these for smoothing wood surfaces without chemicals. Use the White Driver Pad **P1420DRIVER** or **P1428DRIVER**.

Use dry on wood flooring or decks

Grit	item#
20-inch	
20	SP1319020
36	SP1319036
60	SP1319060
80	SP1319080
100	SP1319100
28-inch	
20	SP1327020
36	SP1327036
60	SP1327060
80	SP1327080
100	SP1327100
all sandpaper 20/case	

Pro Sandpaper



This Pro Sandpaper is double-sided and longer lasting than standard sandpaper, cutting paper usage drastically! Comes in grits ranging from the ultra-aggressive 16 grit to the popular 100 grit. Use these for smoothing wood surfaces without chemicals. BOTH sides of this paper can be used! Use the White Driver Pad **P1420DRIVER** or **P1428DRIVER**. **Use dry** on wood flooring or decks

Grit	item#
20-inch	
16	PPSP1319016
24	PPSP1319024
36	PPSP1319036
60	PPSP1319060
80	PPSP1319080
100	PPSP1319100
28-inch	
16	PPSP1327016
24	PPSP1327024
36	PPSP1327036
60	PPSP1327060
80	PPSP1327080
100	PPSP1327100
all sandpaper 20/case	

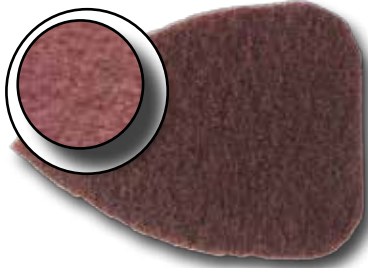
**Lasts up to
6x longer!**

Specialty Pad

**SQP for Palm Sander
SSPMPSSQP**

Use this little dynamo with the Black & Decker mouse sander and detailer to get hard-to-reach areas. Same great pad as our popular SQP! Sold in cases of 65 only.

65/Case



Bucket on a Stick

**SSBOS18
SSBOS24**

Our innovative Bucket on a Stick design holds 5 quarts of finish and provides the best balance and control of any all-in-one applicators. The microfiber mop head applies the finish quickly and smoothly. Easy to clean and maintain.

each

SS0403Z



18-inch microfiber mop head

SS0406Z



24-inch microfiber mop head

each

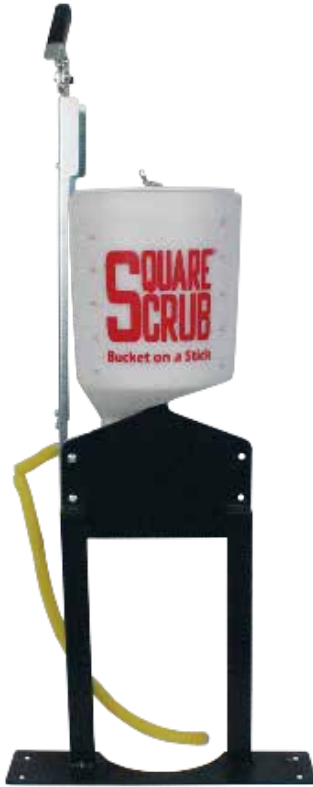


**Square Shine
SQSFLR14PN**

Square Shine Floor Reviver is a great addition to any floor maintenance program. A concentrated, economical formula that will put new life into your finished flooring. Square Shine works hand-in-hand with the Square Scrub SSE (Square Shine Enhancer) Pad for beautiful results. It features a concentrated, economical formula that will put new life into your finished flooring and easy mop-on application.

4 one-gallon bottles/case

Optional and Original Replacement Equipment



Solution Tank SSEBG-WTS

Stone care and other instances where water is needed just became easier with the Square Scrub Solution Tank. Easy to install, the solution system fits over the removable weight threaded rods for a secure fit. The tank is the same found on our popular Bucket on a Stick. At 1.25 gallons, there's enough water to help with most any surface needs and the tapered bottom make certain you can easily drain the tank. The American Made set up is made from 7 guage powder coated steel.

each



HEPA Dry Vac Kit

SS EBG-HDVK (Isolated Handle)

SS EBG-HDVK-WB (Welded Bar Handle)

The HEPA Dry Vac Kit is the answer to your airborne particulate problems! It has a 6 quart capacity and pulls under 4.5 amps. That allows the user to tap into the power source at the Square Scrub motor, eliminating the need for extension cords. With the included faceplate adapter*, the HEPA Dry Vac Kit mounts directly to the machine. In conjunction with the Dust Containment Kit, this Dry Vac Kit significantly reduces airborne particulates.

This is NOT designed to remove the debris from the floor.

each



With the Isolated Handle



Welded Bar Handle

***Important Note:** The newest addition to the Square Scrub line, the HEPA Dry Vac Kit, is mounted directly to the machine via the included faceplate. Because of the changeover to the isolated handle on January 22, 2013 (EBG-20/C) and May 17, 2013 (EBG-28), it is important to request the proper part number when ordering the HEPA Dry Vac Kit. Machines built prior to these dates, will require a different face plate than machines that include the isolated handle. **It is also important to note:** Some machines that were built prior to these dates were sold after these dates. Because of this, referring to the date sold is not an accurate way to determine whether the machine is equipped with an isolated handle. An example of a machine with an isolated handle and one without is shown to the right. If you need help determining which type of handle your machine has, please call us at 800-557-6822. Be sure to have your machine's serial number ready when you call.

Optional and Original Replacement Equipment

Face Plate Adapter for HEPA Dry Vac Kit

each

Face Plate Only

SS VO-03R (Isolated Handle)

SS VO-05R (Welded Bar Handle)

A faceplate adapter that allows you to mount the HEPA Dry Vac Kit directly to your Square Scrub EBG Floor Preparation Machine. Due to the incorporation of the Isolated Handle into late model machines, it is important to be sure to order the correct adapter. *Please see page 18 for details.



HEPA Cloth Bag

each

SS EBG-HDVK-CB

6 quart cloth replacement bags for use with the HEPA Dry Vac Kit. **Each.**



HEPA Dome Filter

each

SS EBG-HDVK-HDF

Replacement HEPA Dome Filter for use with the HEPA Dry Vac Kit. **Each.**



Ultimate HEPA Micro Lined Bag

each

SS EBG-HDVK-UHB

Replacement bags for use with the HEPA Dry Vac Kit. **10/Case.**



Backpack Tool Kit

each

SS EBG-HDVK-TK

The HEPA Dry Vac Kit can be converted to a Backpack Vac for use on post-prep clean-up jobs like VCT and Carpet Encapsulation pick-up. This toolkit is all you need to take this vacuum from the machine to a backpack.



Optional and Original Replacement Equipment



Dust Containment Kit SS142010

Our Dust Containment Shroud adds another dimension in controlling indoor airborne particulates during dry stripping. Easy to install. Fits any Square Scrub machine built after 2/1/2010. All EBG-28's have these as standard equipment.

each



Dust Skirt SS142005 / SS142805

Our Dust Skirt kit adds a measure of particulate control and installs in minutes. Made of durable material, the Dust Skirt is a cost-effective solution for any machine. Comes with new adhesive strip and velcro.

each



Grip Face SS142003V

The heavy-duty velcro grip face is a vital part of your Square Scrub machine. Replace only when the teeth on the Grip Face are worn.

each



Grip Face SS142803V

The heavy-duty velcro grip face is a vital part of your Square Scrub machine. Replace only when the teeth on the Grip Face are worn.

each



Double-Sided Grip Face Adapter SS 142024

A double-sided version of the heavy-duty male velcro grip face. Ideal for use between drivers and pads for an even more secure grip. Replace only when the teeth on the Grip Face are worn. **For use with the 20-inch machine only.**

each

Optional and Original Replacement Equipment



Double-Sided Grip Face Adapter SS 142824

each

A double-sided version of the heavy-duty male velcro grip face. Ideal for use between drivers and pads for an even more secure grip. Replace only when the teeth on the Grip Face are worn. **For use with the 28-inch machine only.**

21lb Plate Weights - Drop SS142009D

each



Adding additional weight helps the machine penetrate thick finishes. The 21-pound plate is a great way to effectively and safely add additional weight to your machine (20-inch plates only). **Important!** These weights can only be fitted to machines that currently have Drop Weights For Machines with Slotted Weights, please see the Slotted Weights listed below. (20 Inch Plates Only).

21lb Plate Weights - Slotted SS142009S

each



Adding additional weight helps the machine penetrate thick finishes. The 21-pound plate is a great way to effectively and safely add additional weight to your machine (20-inch plates only). **Important!** These weights can only be fitted to machines that currently have Slotted Weights. For machines with Drop Weights, please see the Drop Weights listed above. (20 Inch Plates Only).

Optional and Original Replacement Equipment



Two-piece Handle

Enjoy even easier portability with our optional two-piece handle. This easy to remove handle is made of the same durable steel as our fixed handle and enhances portability in a smaller vehicles.

each

IMPORTANT PLEASE NOTE:

The two-piece handle must be factory installed. The price of the handle on this page reflects the cost of the handle and installation at Square Scrub. The two-piece handle is NOT an option that can be installed after receiving the machine.



Micro Switch

SS142004 / SS142804

The Micro Switch is the ignition for the Square Scrub. This is an internal piece and is easily and quickly replaced. This switch works for both the 20-inch and 28-inch machines.

each



Hour Meter Kit

SS142008 / SS142808

The hour meter is a great way to track total manhours spent using EBG products. Simple to install, the hour meter can allow for better budgeting of labor spent resurfacing floors. The hour meter works with any of the Square Scrub machines.

each



1725 RPM Motor

SS142006-1725

The ultra-quiet version of the motor on the Square Scrub machines is heavy-duty, reliable and just 62dB. Easy to change, this American made motor comes with a two-year manufacturer's warranty and is standard on the 20/Q.

each



3450 RPM Motor

SS142006-3450

SS142806-3450

The 3450 rpm motor for Square Scrub is still a very quiet 73dB and extremely powerful and smooth. This motor comes standard on all Square Scrub machines except for the EBG-20/Q, is also American made and comes with a two-year manufacturer's warranty.

each

Optional and Original Replacement Equipment



Isolator Repair Kit SS142001

each

The Isolator Repair Kit has been created to make this standard maintenance process easier. Items include: A new grip face, four isolators, required bolts and one tube of blue Loctite. **FOR 20-INCH MACHINE ONLY**



Isolator Repair Kit SS142801

each

The Isolator Repair Kit has been created to make this standard maintenance process easier. Items include: A new grip face, eight isolators, required bolts and two tubes of blue Loctite. **FOR 28-INCH MACHINE ONLY**



Eccentric Assy & Isolator Kit SS142002

each

This kit contains everything needed to replace the Eccentric Assembly. When replacing, Square Scrub recommends installing new isolators as well. Items include: A new grip face, one eccentric assembly, eight isolators, required bolts and one tube of blue Loctite. **FOR 20-INCH MACHINE ONLY**



Eccentric Assy & Isolator Kit SS142802

each

This kit contains everything you would need to replace the Eccentric Assembly. When replacing, Square Scrub recommends installing new isolators as well. Items include: A new grip face, one eccentric assembly, eight isolators, required bolts and two tubes of blue Loctite. **FOR 28-INCH MACHINE ONLY**

Optional and Original Replacement Equipment



Threaded Rod Kit (5") (for 20" machines) SS142019

each

This kit includes everything needed to adapt your machine with removable weights to the 5" threaded rods. Use this kit when you need to stack more weight on your machine. Easy installation for machines made after 2-10-11. For 20" machines only.



Threaded Rod Kit (5") (for 28" machines) SS142819

each

This kit includes everything needed to adapt your machine with removable weights to the 5" threaded rods. Use this kit when you need to stack more weight on your machine. Easy installation for any 28" machine. For 28" machines only.



Carrying Handle SS142020/SS142820

each

Quickly add a pair of carrying handles to your machine for easier transport. Remove the knob on the removable weights, slide a handle on and tighten down.



Removable Weight Knob SS142014/SS142814

each

Keep your removable weights anchored to your machine with this knob! Easy on the hands, this durable knob will fit any Square Scrub machine with removable weights and works on the four and five inch threaded rods.



Universal Vacuum Bracket SS EBGUVB

each

Use this bracket to mount most backpack vacuums to the Square Scrub (removable weights models only). Easy to attach and sturdy 12 gauge powder coated steel design.

Diamonds for Square Scrub

PLEASE NOTE : All diamonds are shipped brand new. This means they will all need to be “broken in” before use. Run each grit, starting with the 3000 grit and working your way down to 30 grit, for 5-10 minutes per grit OR until the shiny cover is removed. Make certain to break in the diamonds on the surface you intend to refinish. This will help ensure maximum effective use when starting your stone care program. An alternate method is to use a hand grinder and remove the shiny finish that way, although this could easily make your diamonds uneven. Be extremely careful if using this method.



The comparison above shows the diamond bar broken in (left) and the diamond bar (right) unused, or not broken in. As you can see, the one on the right is still glossy. The one on the left has been broken in and ready for use.

NOTE : Diamonds are considered a wearable item, the same as any other pad. Square Scrub cannot warranty these items once they’ve been used.

Diamond Polish Pads for 20-inch Machines



SS PLP1420XXXX / SSPLP1428XXXX

Square Scrub's diamond PolyPads are available for the 20 and 28 inch machines. Grits included are 800, 1500, 3000 and 6000. Each pad comes badged with the grit value and a Square Scrub logo on the "machine" side, and with red wear dots on the "floor" side. These pads are great for taking the shine to the highest level, or use in a daily maintenance program to retain a high gloss. Sold 5 in a case or individually. Price is listed per case.

14x20

5/case

SS PLP14200800

SS PLP14201500

SS PLP14203000

SS PLP14206000

14x28

5/case

SS PLP14280800

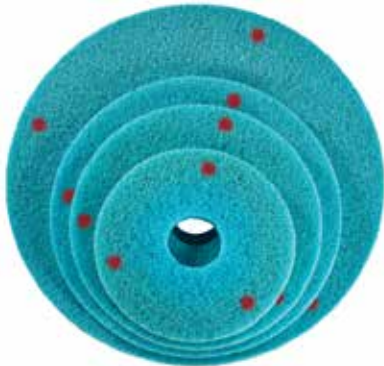
SS PLP14281500

SS PLP14283000

SS PLP14286000

5/case

Diamond Polish Pads for Rotary Machines



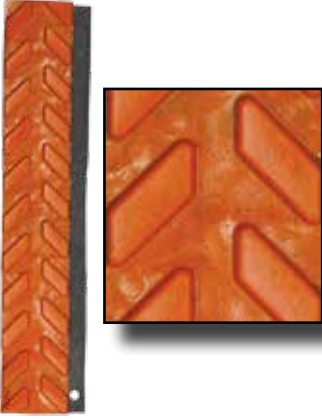
SS RDPXXXXXX- The same great PolyPads used by Square Scrub will be available in several rotary sizes as well. All contain red wear dots and come in sizes ranging from 13" to 27". These pads are not to be used on Square Scrub machines. Pads sold individually or by case, price listed is per case.

part#	dia.
SS RDP13XXXX	13"
SS RDP14XXXX	14"
SS RDP15XXXX	15"
SS RDP16XXXX	16"
SS RDP17XXXX	17"
SS RDP18XXXX	18"
SS RDP19XXXX	19"
SS RDP20XXXX	20"
SS RDP21XXXX	21"
SS RDP24XXXX	24"
SS RDP27XXXX	27"

Sold 5 per case or individually. Price reflects case price. Each size comes in grits of 800, 1500, 3000, and 6000

Please note : The four "X"s at the end of each part number are for the grit of the pad. For example, if you want a 15" round pad at 800 grit, the part number is SS RDP150800

Diamonds for Square Scrub



SS GD0030R - The first step for your stone polishing, the orange 30 grit diamonds are tough enough to handle the most stubborn scratches. The 30 grit diamonds will shoulder the brunt of the work for removing high spots, so square footage will range from 100-3000 square feet. Four bars of each grit of diamonds are required for stone polishing.

set of 4

30 Grit



SS GD0050R - The second step for your stone polishing, the Green 50 grit diamonds are tough enough to handle the most stubborn scratches. The 50 grit diamonds will perform nearly the same amount of work the 30 grit does, so square footage will range from 100-3000 square feet. Four bars of each grit of diamonds are required for stone polishing.

set of 4

50 Grit



SS GD0100R -The 100 grit "water" Blue diamonds are used for the third step of the eight step process. These should last a little longer on surfaces prepped with the 30 and 50 grit diamonds. Square footage estimates are approximately 3000-6000 square feet. Four bars of each grit of diamonds are required for stone polishing.

set of 4

100 Grit



SS GD0200R - You should see a noticeable difference on your surface once you've used the Dark Brown 200 grit diamonds. A decrease in the muddy residue should be noticed using this diamond. Thanks to the work of the other grits, you should be able to do approximately 4000-6000 square feet. Four bars of each grit of diamonds are required for stone polishing.

set of 4

200 Grit

Diamonds for Square Scrub



SS GD0400R - The 400 grit Burgundy diamonds mark the midway point of the polishing system and will begin to leave a noticeable shine on your surface. You should be able to do approximately 4000-6000 square feet with this grit. Four bars of each grit of diamonds are required for stone polishing.

set of 4

400 Grit



SS GD0800R - Once you use the Light Yellow 800 grit diamonds, the surface should be extremely smooth and most scratches disappearing upon close inspection. You should be able to do approximately 4000-6000 square feet with this grit. Four bars of each grit of diamonds are required for stone polishing.

set of 4

800 Grit



SS GD1500R - The light Blue 1500 grit diamonds marks the seventh step of polishing . You should be able to do approximately 4000-6000 square feet with this grit. Four bars of each grit of diamonds are required for stone polishing.

set of 4

1500 Grit



SS GD3000R - The ultra-fine Medium Brown 3000 grit diamonds are the final diamonds needed for polishing. You should be able to do approximately 4000-6000 square feet with this grit. Four bars of each grit of diamonds are required for stone polishing.

set of 4

3000 Grit

Vacuum Brazed Diamonds for Square Scrub



SS VBM030 - The 30 grit Vacuum Brazed Diamonds are designed to remove finish from stone surfaces. Extremely aggressive, these diamonds should not be used in daily or routine maintenance, but they excel in taking finish off of terrazzo or marble. Four bars of each grit of diamonds are required for stone care.

set of 4

30 Grit

Please allow up to 6 weeks lead time for the Vacuum Brazed Metal Diamonds.



SS VBM050 - The 50 grit Vacuum Brazed Diamonds continue the work done by the 30 grit version, while reducing the visible scratches. Extremely aggressive, these diamonds should not be used in daily or routine maintenance, but they excel in taking finish off of terrazzo or marble. Four bars of each grit of diamonds are required for stone care.

set of 4

50 Grit

Please allow up to 6 weeks lead time for the Vacuum Brazed Metal Diamonds.



SS VBM100 - The 100 grit Vacuum Brazed Diamonds are the final step in the finish removal process. These will leave behind visible scratches, but the surface will be manageable for the next step with resin diamonds. Also extremely aggressive, these diamonds should not be used in daily or routine maintenance. Four bars of each grit of diamonds are required for stone care.

set of 4

100 Grit

Please allow up to 6 weeks lead time for the Vacuum Brazed Metal Diamonds.

Concrete Diamonds for Square Scrub



SS CDMR0030 - The 30 grit concrete diamonds are super-aggressive diamonds meant to chew through the initial layer of concrete. These hybrid metal/resin diamonds will provide plenty of cutting power. Each bar is 4.75" in length, requiring eight total bars to complete a set for each grit. Price shown is for a set of eight bars. Make sure to use WET!

set of 8

30 Grit



SS CDMR0050 - Use the 50 grit hybrid metal/resin diamonds to remove the scratches made by the 30 grits. Also very aggressive, the 50 grit should be used wet to avoid premature wearing. Each bar is 4.75" in length, requiring eight total bars to complete a set for each grit. Price shown is for a set of eight bars. Make sure to use WET!

set of 8

50 Grit



SS CDMR0100 - The 100 grit hybrid metal/resin diamonds should begin to make a noticeable difference in removing the scratches and smoothing the surface. Use these wet to avoid premature wearing. Each bar is 4.75" in length, requiring eight total bars to complete a set for each grit. Price shown is for a set of eight bars. Make sure to use WET!

set of 8

100 Grit



SS CDMR0200 - With the 200 grit hybrid diamond, you've reached the midway point of our concrete diamonds. Your surface should be smooth, few scratches remaining, and you should see less slurry. Use these wet to avoid premature wearing. Each bar is 4.75" in length, requiring eight total bars to complete a set for each grit. Price shown is for a set of eight bars. Make sure to use WET!

set of 8

200 Grit

Concrete Diamonds for Square Scrub



SS CDR0200 - The resin twin to the hybrid version, this 200 grit diamond transitions you from the hybrid to resin diamonds. Use these wet to avoid premature wearing. Each bar is 4.75" in length, requiring eight total bars to complete a set for each grit. Price shown is for a set of eight bars. Make sure to use WET!

set of 8

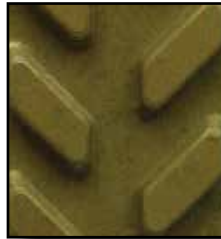
200 Grit



SS CDR0400 - The 400 grit transitions to a resin-only bar and should start the process of noticeably smoothing the surface. Users should see a drastic reduction in scratches by this point. Each bar is 4.75" in length, requiring eight total bars to complete a set for each grit. Price shown is for a set of eight bars. Make sure to use DRY!

set of 8

400 Grit



SS CDR0800 - As you finish the 800 grit diamonds, the floor should be nearly completed and very few remaining scratches, if any. Also a resin diamond. Each bar is 4.75" in length, requiring eight total bars to complete a set for each grit. Price shown is for a set of eight bars. Make sure to use DRY!

set of 8

800 Grit



SS CDR1500 - The final diamond set is the 1500 grit. The end result should be a very smooth, scratch-free surface that is ready for Square Guard. Each bar is 4.75" in length, requiring eight total bars to complete a set for each grit. Price shown is for a set of eight bars. Make sure to use DRY!

set of 8

1500 Grit

Concrete Diamonds for Square Scrub

Please note :

Unlike other diamonds, the concrete diamonds are not color-coded by resin color, but rather by the color of the velcro. The diamonds are also stamped on the back to let you know what grit you have. Those that are hybrid metal diamonds (a combination of metal and resin) will be marked with an “M” next to the grit. The hybrid metals are provided on 30, 50, 100 and 200 grits only.



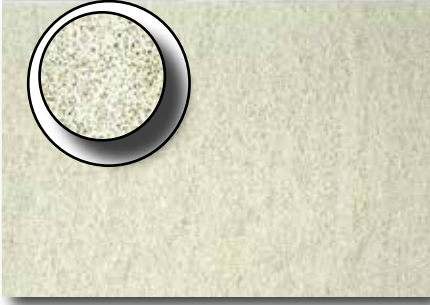
Concrete Metal Diamonds for Square Scrub



The long-lasting metal “Toolip (pronounced like tulip)” diamonds from Square Scrub are there for the heavy work. Each bar is 19” in length, making it necessary for just two bars for each grit. Aggressive and durable, these diamonds will grind paint off concrete while exposing the “salt-and-pepper” look in your concrete surface. All metal diamonds will need two bars per grit. Always use metal diamonds wet.

SSTD0016	16 grit	2/set
SSTD0024	24 grit	2/set
SSTD0030	30 grit	2/set
SSTD0050	50 grit	2/set
SSTD0100	100 grit	2/set
SSTD0200	200 grit	2/set
SSTD0400	400 grit	2/set

Pads for Use with Chemicals



P1420DRIVER/P1428DRIVER

The Driver pad is designed to provide a spacer between your diamonds and the machine. Just 1/4" thick, attach the diamonds to the pad with the Velcro on the back of each bar. Always check spacer and driver pads frequently for wear and replace as needed! Pad is also used for marble paste and granite powder application. White driver pads come 10 per case. Sold by the case only.

10/case

Use this pad with Square Scrub diamonds, along with paste and powder application

Tile And Grout Chemicals for Square Scrub



SSSTP6LB - Square Tile Polish is a natural, non-wax compound to restore and polish most unglazed ceramic, porcelain, and quarry tiles. Slip resistant, it will not yellow and eliminates the need to wax tiles. Will cover up to 672 square feet per bucket. Sold in 6lb buckets.

6lb



SSSTR1GAL - Square Tile Rinse should be used after Square Tile Polish. A safe and effective grout cleaner for ceramic, porcelain, and quarry tiles. Ideal for use in bathrooms or pool areas. Will cover up to 480 square feet per gallon. Sold in one gallon bottles.

1 gal

Marble Chemical for Square Scrub



SS SPST2525 - Square Paste is like the icing on the cake for polishing marble. The paste, will bring the shine to a new plateau and give your floor a "pop". Square Paste is applied after the final grit of diamonds has been used or may be used as a polish alone. Works on limestone, travertine, onyx, and cement-based terrazzo, too. Expect coverage up to 250 square feet per pound (6250 per container). Sold in 25 pound buckets only.

25lb

Granite Chemicals for Square Scrub



SS SGPMED - Granite Powder comes in medium and dark. Use the medium powder for every color except black. Specifically formulated to polish granite. Each 8 ounce container will cover approximately 150 square feet. Two 8 ounce jars per carton. You can expect approximately 25 sqft/hr using this powder. Buff with a white pad after completed. Sold per carton.

2 jars/carton



SS SGPDRK - Granite Powder comes in medium and dark. Use the dark powder for black granite only. Specifically formulated to polish granite. Each 8 ounce container will cover approximately 150 square feet. Two 8 ounce jars per carton. You can expect approximately 25 sqft/hr using this powder. Buff with a white pad after completed. Sold per carton.

2 jars/carton

Concrete Chemicals for Square Scrub



SS SGRD1 - Square Guard is a specially blended polymer that provides stain resistance for concrete. The use of Square Guard allows the concrete to breathe through a tough, long wearing, repairable surface. Apply after completing the 800 grit step of your concrete program. Available in one gallon bottles. Each gallon will cover up to 2000 square feet. (4 one gallon bottles/case)

4 one gallon bottles/case



SS SDENSE5 - Square Densifier is the ultimate blend of reactive silicates and active surface agents for use with polished concrete systems. It will harden, strengthen, increase resistance to stains and preserve the polished surface of your concrete. Apply densifier after completion of the 200 grit pass. Be certain to remove any excess that has not dried in 30 minutes. One gallon will cover up to 750 square feet. Available in one gallon bottles. (4 one gallon bottles/case)

4 one gallon bottles/case