



NAVIGATOR

Dilution Control System

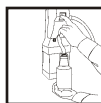
Why It's A Better System

- Concentrate and RTU labels are numbered and color coded for safety and to facilitate training
- Closed system - Spill proof container
- New Metered Tip with each concentrate provides proper dilution each time
- English/Spanish label copy
- Each concentrate has an easy carry handle
- Recyclable container

Why It's A Better Cleaner

- Super powerful degreaser - Cuts tough greasy dirt
- Non-butyl, solvent free, non flammable - Safer to use
- Quickly emulsifies oily soils - Works fast on the toughest dirt and grime.
- Works on any oily soil - One product does more jobs, so you have less inventory and easier training
- Fresh fragrance - Leaves area smelling clean

How It Cleans



Dispense precisely diluted cleaner into a clean, empty container. If solution is for reuse, properly label NAVIGATOR RTU #13 Super Duty Degreaser container.



Liberally apply by sponge or spray onto surface to be cleaned. Allow to soak 2-3 minutes. Scrub if soil is heavy.



Wipe clean and Rinse with water thoroughly. Replace solution when it becomes visibly dirty. (Pretest surfaces for colorfastness. Not recommended for wood, aluminum, or glass surfaces. Finished floors may require buffing or recoating after spot cleaning.)

Navigator Dispensers

Low-Flow Dispenser Product No. 13172
 High-Flow Dispenser Product No. 13173
 Dispenser Connector Kit Product No. 13182

13 SUPER DUTY DEGREASER

Where It Cleans

- Ceramic tile
- Glazed porcelain
- Stainless steel
- Food service areas
- Terrazzo, granite, concrete
- Enameled metal
- Shop tools, equipment and machinery

Technical Data

Packaging (concentrate) 2/2 Liters per case
 Product Number 13163
 Concentrate Color Orange
 RTU Color Orange
 RTU Fragrance Fresh Clean
 Foaming Moderate
 Free-Rinsing Yes
 % Phosphates None
 Caustics Yes
 RTU pH 12.9
 RTU Yield Low-Flow 80 Quarts per case
 RTU Yield High-Flow 36 Gallons per case



NAVIGATOR 2-Liter bottles are designed to be used in the NAVIGATOR Dilution Control System.