

# NAVIGATOR

## Dilution Control System

### Why It's A Better System

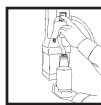
- Concentrate and RTU labels are numbered and color coded for safety and to facilitate training
- Closed system - Spill proof container
- New Metered Tip with each concentrate provides proper dilution each time
- English/Spanish label copy
- Each concentrate has an easy carry handle
- Recyclable container

### Why It's A Better Cleaner

- For hard, nonporous surfaces not requiring a rinse
- Multiple uses - Sanitizes precleaned surfaces - Food contact surface sanitizer
- Effective in 500 PPM hard water against *Escherichia coli* 0157:H7 and *Staphylococcus aureus*
- Kills 99.99% of Foodservice Germs (*E.coli*, *Salmonella* and *Listeria*)

### How To Use

#### SANITIZE HARD WASHABLE SURFACES



Dispense precisely diluted sanitizer into clean properly labeled container.



Thoroughly wet surface for at least 60 seconds.  
Allow surface to air dry. **Do not rinse.**

Prepare a fresh solution daily or more often if solution becomes visibly diluted, clouded or soiled.

### Navigator Dispensers

- Low-Flow Dispenser . . . . . Product No. 13172
- High-Flow Dispenser . . . . . Product No. 13173
- Dispenser Connector Kit . . . . . Product No. 13182

# 16 cleanworks<sup>®</sup>

## NO RINSE SANITIZER

### Where It Cleans

- Food preparation areas
- Food processing equipment
- Dairy equipment
- Food cooking utensils
- Silverware and glasses
- Sink and counter tops
- Refrigerated storage
- Display equipment
- Beverage dispensing equipment

### Technical Data

Packaging (concentrate) . . . . .	2/2 Liters per case
Product Number . . . . .	13190
Concentrate Color . . . . .	Colorless
RTU Color . . . . .	Colorless
RTU Fragrance . . . . .	Odorless
EPA Registered . . . . .	Yes
% Phosphates . . . . .	None
pH (concentrate) . . . . .	6.0 - 8.0
RTU Yield Low-Flow . . . . .	2168 Quarts per case
RTU Yield High-Flow . . . . .	542 Gallons per case

### Efficacy

This product is an effective sanitizer at 200 ppm active quat for use on food contact surfaces in 500 ppm hard water against: *Campylobacter jejuni*, (Community Associated) *Methicillin-Resistant Staphylococcus aureus* - [CA-MRSA] [MRSA] (NRS384) (USA300), (Community Associated) *Methicillin-Resistant Staphylococcus aureus* - [CA-MRSA] [MRSA] (NRS123) (USA400), *Escherichia coli*, *Escherichia coli* 0157:H7, *Klebsiella pneumoniae*, *Listeria monocytogenes*, *Salmonella enterica*, *Shigella sonnei*, *Staphylococcus aureus* - *Methicillin-Resistant* [MRSA], *Yersinia enterocolitica*, *Vibrio cholerae*.



NAVIGATOR 2-Liter bottles are designed to be used in the NAVIGATOR Dilution Control System.