

MOST POWERFUL AIRFLOW WITH 3-SPEED MOTOR

Dry floors, carpets, walls and ceilings!



SANDIA GEN-AIR AIR MOVER

Sandia
PRODUCTS

Your Ultimate Choice in
Profitable Cleaning Performance!

POWERFUL. DURABLE. CONVENIENT. POWERFUL DRYING FROM SANDIA PRODUCTS

Powerful airflow dries floors, carpets, walls and ceilings! The 1/2 HP, 3-speed motor gives ample power for drying surfaces and moving musty air. 10-inch wide, steel fan blade and frame with 14-inch chassis opening. Designed to operate at three angles and stackable for easier storage!

- Powerful Airflow
- Stackable
- Innovative Design
- 3 Operation Angles
- 3-Speed Motor
- Advanced Features

SANDIA GEN-AIR AIR MOVER

by Sandia Products



Manufactured with
Pride in the U.S.A.

SEE THE BENEFITS

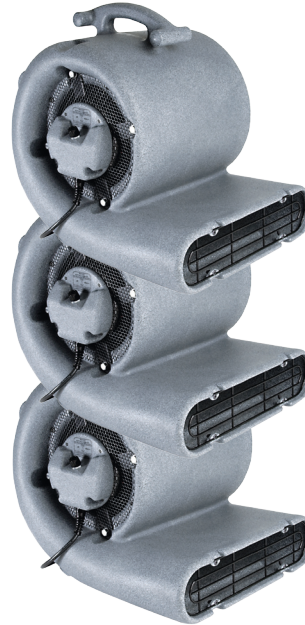
of the Sandia Gen-Air Air Mover

- The 1/2 HP, 3-speed motor gives ample power for drying surfaces and moving musty air.
- 10-inch wide, steel fan blade and frame. 14-inch chassis opening.
- The durable, roto-molded body withstands the toughest environments and is easy to keep clean.
- Designed to operate at three angles. Aim the air stream at the floor to move air and dry carpets or tip back to dry curtains, walls and ceilings.
- Stack up to three air mover units for easier storage.
- Balanced design with molded carrying handle makes transportation easy.
- (1) 20-foot, 16/3-gauge safety power cord.
- Air intake and outlet screens keep airflow free from debris and protect fingers from the powerful steel fan blades.
- Lifetime warranty on roto-molded chassis, 1-year on electrical components.

INNOVATIVE DESIGN BY SANDIA!

Compare the features. Compare the technology.

DISCOVER THE POWER OF HAVING OPTIONS!



Stack up to 3 units for easier storage!

Handle fits conveniently into the bottom of the air mover to stack three units easily and safely.

Operate at 3 different fan speeds!

Low - 780 RPM at 1500 CFM
Med - 1000 RPM at 1900 CFM
High - 1150 RPM at 2400 CFM

Designed to operate at 3 angles!

Aim at the floor, tip back or tip up to move air and dry floors, curtains, walls and ceilings!

Specifications:

GEN-AIR AIR MOVER

Model: 90-0000

Motor: 1/2 HP, 115 V

Fan Size: 10-Inch Steel Blade and Frame

3-Speed Fan: 780 RPM | 1000 RPM | 1150 RPM

Air Flow Rates: 1500 CFM | 1900 CFM | 2400 CFM

Chassis: Molded, High-Density Polypropylene

Power Cord: (1) 20-Foot Safety, 16/3-Gauge

Dimensions: 19.2" L x 14.5" W x 19.5" H

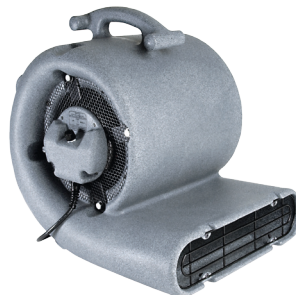
Weight: 32 lbs.

Warranty: Lifetime on body, 1-year on electrical components

Features:

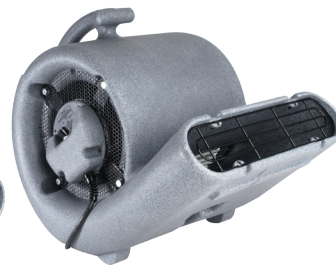
DESIGNED TO OPERATE AT THREE ANGLES!

① Flat



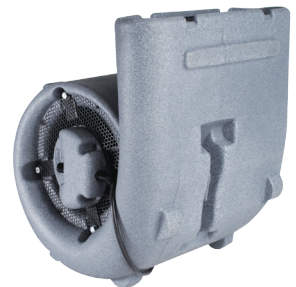
Aim at floor to move air or dry carpets.

② 45 Degrees



Tip back to dry curtains and walls.

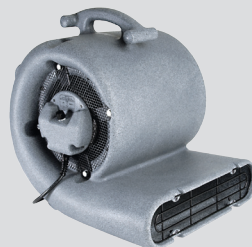
③ 90 Degrees



Tip up to dry walls and ceilings.

Sandia
PRODUCTS

Your Ultimate Choice in
Profitable Cleaning Performance!



**CALL US TODAY IF YOU HAVE ANY QUESTIONS,
OR WOULD LIKE TO PLACE AN ORDER!**

15571 Container Lane, Huntington Beach, CA 92649
(p) 800-983-5834 | (f) 714-901-8404 | www.sandiaplastics.com